

Academic Partnerships

Home / Academic Partnerships

Academic Partnerships

Academic Partnerships

[Community College Partnerships](#)

Academic Partnerships
 Community Services Building (CSB), 3rd Floor
 P.O. Box 872108
 Tempe, AZ 85287-2108

Phone: 602-496-1180
 Fax: 602-496-2146

Arizona State University is committed to establishing and growing partnerships with community colleges and other institutions and organizations that help support the academic success and ultimate college degree completion for today's students.

A unit of the [Office of the University Provost](#), Academic Partnerships serves as a resource for community college employees, as well as ASU faculty and staff, regarding student preparation for university success, partnership programs, community college relations, and issues resolution.

We strive to create a student-centered "culture of transfer", which is accomplished through innovative, research-based strategies designed to significantly increase the number of students who complete an associate's degree and a bachelor's degree. Our Arizona and out-of-state partnership programs can be accessed on the [ASU Transfer Page](#).

In addition, Academic Partnerships has responsibility for relationships with a variety of other institutions and organizations, as determined by the University Provost.

Please contact us if we can be of assistance.

Our Team



[Maria Hesse](#)

Vice Provost for Academic Partnerships



[Jenna Kahl](#)

Director, Community College Relations
jenna.kahl@asu.edu
 602-496-1179



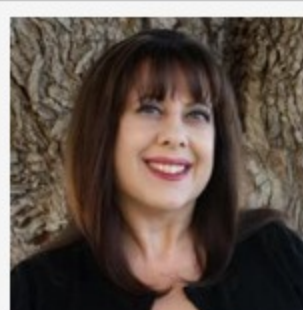
[Dena Stevens](#)

Assistant Director, Community College Relations
dena.stevens@asu.edu
 480-727-4525



[Analisa LaCour](#)

Coordinator, Community College Relations
analisa.lacour@asu.edu
 602-496-1381



[Melanie Pshaenich](#)

Assistant to the Vice Provost
melanie7@asu.edu
 602-496-1180

Office of the University Provost

Arizona State University is a top ranked research university in the greater Phoenix metropolitan area.

[Contact Us](#)

Academics

- [Academic Integrity](#)
- [Academic Accreditation](#)
- [Academic Advisors](#)
- [Academic Partnerships](#)
- [Committees](#)
- [eAdvisor™](#)
- [University Senate](#)

Faculty and Staff

- [Academic Personnel](#)
- [Business and Finance](#)
- [Curriculum Development](#)
- [Faculty Excellence](#)

Initiatives

- [Campus Safety](#)
- [Inclusion](#)
- [The LEAD Project](#)

About

- [Leadership](#)
- [ASU Facts](#)

