

Service at ASU

- Home
- Sun Devil Service
- Initiatives**
- Blogs
- Contact

Salesforce at ASU

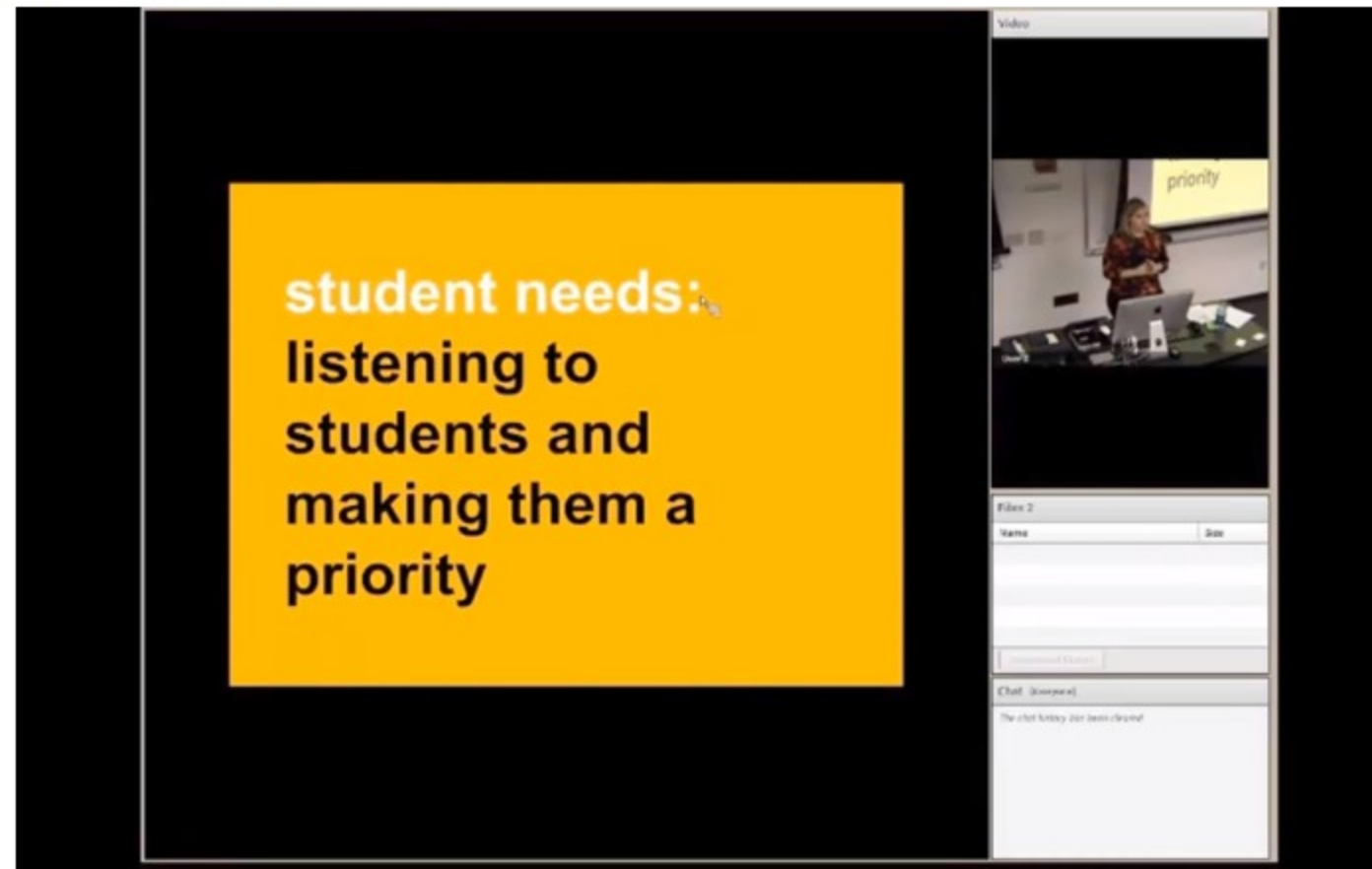
ASU is committed to fundamentally advancing the way in which student service is delivered across the university.

In order to improve efficiencies and provide service-related resources, Salesforce is being implemented across ASU.

The first phase of Salesforce Service has launched. Information sessions about this launch were held December 10-12, 2013. If you were unable to attend a session, please view the recording below.

Please direct questions about Salesforce to [Stacey Lippert](#), Director of Student-Centric Initiatives.

Thank you in advance for your support of this effort.



My ASU

Find all your personalized information related to ASU in one place.

admission

- freshman
- transfer
- international
- readmission
- graduate

- law
- counselor and teacher resources

paying for college

- costs
- financial aid
- scholarships
- tuition
- billing
- residency

academics

- majors
- registration
- asu bookstore
- tutoring & advising
- records & grades
- course catalog
- graduation

life at asu

- asu events
- health & wellness
- housing & dining
- clubs & activities
- safety
- student support
- transportation

jobs & careers

- career services
- sun devil careerlink
- student employment
- graduate research & teaching assistantships